



Lot 6103 (607m<sup>2</sup>)

Willandra Circuit Warragul VIC 3820

**Alpha-Essa 266**

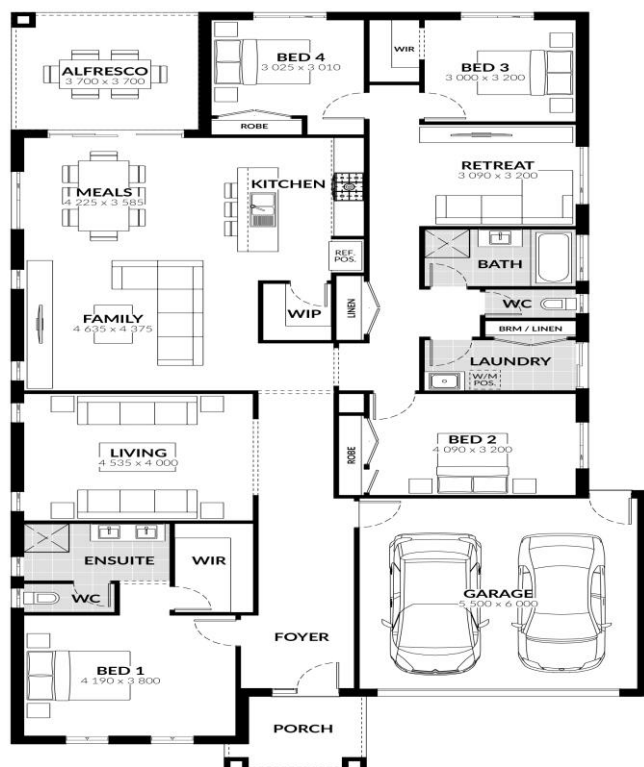
28.6sq

4.0 2.0 Double

FROM  
**\$506,273\***

### Inclusions:

- Spacious Meals and Family Area
- 900mm Westinghouse Rangehood & Upright Cooker
- Gas Ducted Heating
- Solar Hot Water System
- Overhead Cupboard to Kitchen
- Double Vanity to Ensuite
- Professional Colour Consultation
- Sectional Garage Door
- Alfresco
- Colorbond Roof
- 6 Star Energy Rating
- Bushfire Attack Level 12.5 Included
- BlueScope Steel House Frame
- 50 Year Structural Guarantee
- 20mm Caesarstone Benchtops
- Floor Coverings
- NBN Fibre Package
- 2550 Ceiling Height



**FOR ENQUIRIES CONTACT:**

**Tim Gilmore M: 1300 545 464 | EMAIL: HOUSEANDLAND@JGKING.COM.AU**

[WWW.JGKINGHOMES.COM.AU](http://WWW.JGKINGHOMES.COM.AU)

Alpha Collection 2019 homes are available in a range of sizes, which are indicative only. The required block frontage and width is subject to the fall and orientation of your land and developer and council guidelines. Floorplans in this brochure are based on the standard façade option.

Whilst every endeavour has been made to ensure the accuracy of the information provided, all images are for illustration purposes only and may depict fixtures, finishes and features either not supplied or above standard design specification. These items may include decorative light fittings, wall finishes, furniture, window furnishings, fireplaces, cladding, in built joinery, facades and landscaping such as planter boxes, retaining walls, water features, fencing and barbeques.