



## WATERFORD RISE ESTATE

Lot 9 Trailwater Court, Warragul

House: 25.5 Sq | Land: 406m<sup>2</sup> | Frontage: 14m

# \$640,700\*

### HEATHMONT 255

#### EVOLUTION RANGE

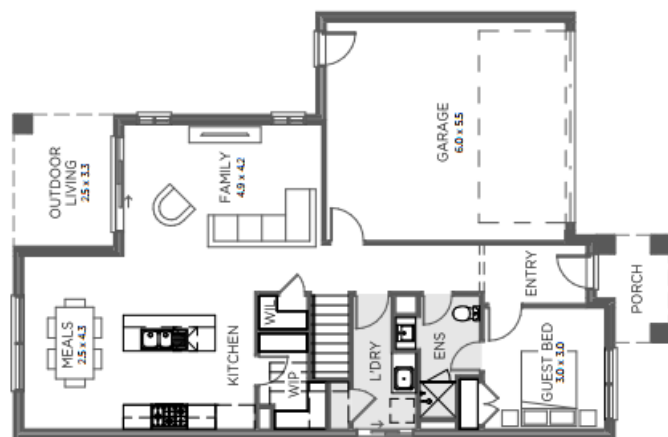
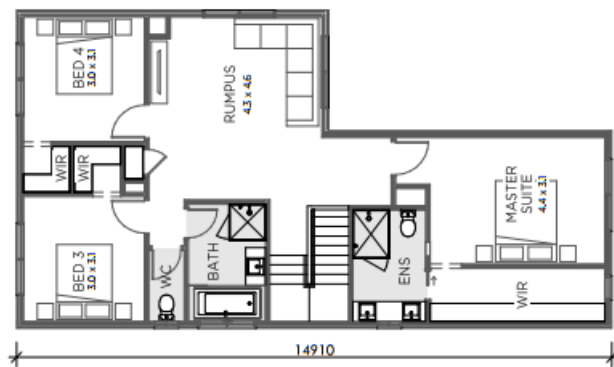
- Façade as shown – others available
- 900mm appliances
- Quality flooring throughout
- Gas ducted heating
- Energy efficient heat pump HWS
- Developer requirements
- Colour Appointment with Interior Designer
- Allowance for site costs
- Includes First Home Buyers Grant\*

Perfect for young families and investors –  
option to add full turnkey

Amazing package In the much sought after  
final release – Be quick!

Not the package for you...contact me today to  
discuss other House & Land Packages to suit  
your needs.

Contact me for a full list of inclusions and  
optional promotions.



4



2



2



2

Build with confidence with an award winning, local builder -  
Finalist in the HIA Professional Major Builder 2023

Colette Battersby Building Consultant | M: 0433 315 513 | E: colette@sjdhomes.com.au | [sjdhomes.com.au](https://www.sjdhomes.com.au)

\*Some images are for illustration purposes only and may not include items in all SJD products. The prices are based on each house as standard and not as displayed. Plan may need to be adjusted to suit block requirements. Unless specified as a fixed price, additional costs may be incurred due to undetermined site conditions based on the results of a site survey and soil test. SJD reserves the right to alter prices or the terms without notice. Unless specified above, price does not include BAL Rating or First Home Owners Grant. Land was available at the time of advertising. For more information visit [sjdhomes.com.au](https://www.sjdhomes.com.au).